

## Distributed Intelligent Clean Air System

### PRODUCT DESCRIPTION

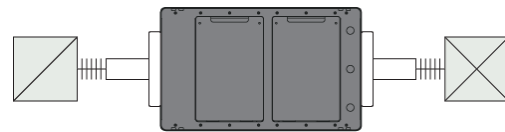
smartIAQ® is an Intelligent Clean Air System that provides demand-driven air cleaning of the design compounds listed in ASHRAE standard 62.1-2019 and -2022 to achieve compliance with the Indoor Air Quality Procedure. smartIAQ is designed to offset the high cost of conditioning excess outdoor air; making systems less costly to deploy and operate, delivering real ROI; all the while ensuring indoor air quality meets current standards.

Operating independently of an HVAC system, smartIAQ is dedicated to ensuring clean air is delivered to the breathing zone when needed, with models configured to cover in up to 4 discrete zones. This allows the SIAQ1-DIST Series to facilitate the reduction of outside air ventilation allowing for the downsizing of HVAC equipment. Designed primarily to be installed **ducted above a drop ceiling** or in **open plenum returns**, the system is also elegantly designed to look at home in an open ceiling application.

smartIAQ is powered by digital control, informed by a panel of solid state, calibrated, air quality sensors that manage the cleaned airflow, utilizing a minimum airflow in an idle state while sensing and ramping to cleaning speed when needed.

### STANDARD FEATURES

- Integral EC Blower - varies from 120CFM in Monitor mode through to a Peak Clean flow of up to 500CFM.
- Quiet operation - Nominal 35 dB(A)
- 12" Dia inlet / outlet
- External filter change indicator with reset switch
- Integral hanger brackets for permanent installation using all thread rods
- NPBI® Soft Ionization delivered in all operational modes
- Supports maximum external static pressure of 0.8" W.C.
- I/O :
  - Inputs: INHIBIT OPERATION
  - Outputs: POWERED ON (READY)  
ACTIVELY CLEANING  
FAULT  
CHANGE FILTER



Standard Single Zone Deployment

### MODEL CONFIGURATIONS

<b>SIAQ1-DIST1S</b>	Standard Single Zone Applications (less than 1,000 sqft Max Flow = 250 CFM, 1 x Particulate Filter, 1 x Molecular Filter)
<b>SIAQ1-DIST1L</b>	Large Single Zone Applications (greater than 1,000 sqft, Max Flow = 500 CFM, 1 x Particulate Filter, 2 x Molecular Filter)
<b>SIAQ1-DIST2</b>	2 Zone Applications (Max Flow = 500 CFM, 1 x Particulate Filter, 1 x Molecular Filter)
<b>SIAQ1-DIST3</b>	3 Zone Applications (Max Flow = 500 CFM, 1 x Particulate Filter, 2 x Molecular Filter)
<b>SIAQ1-DIST4</b>	4 Zone Applications (Max Flow = 500 CFM, 1 x Particulate Filter, 2 x Molecular Filter)

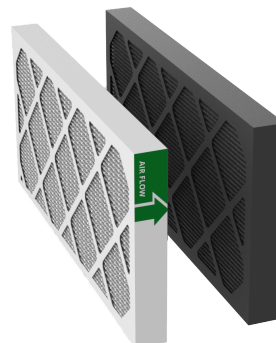
### FILTRATION DETAILS

The SIAQ1-DIST utilizes high efficiency Particulate and Molecular filters to address defined design compounds.

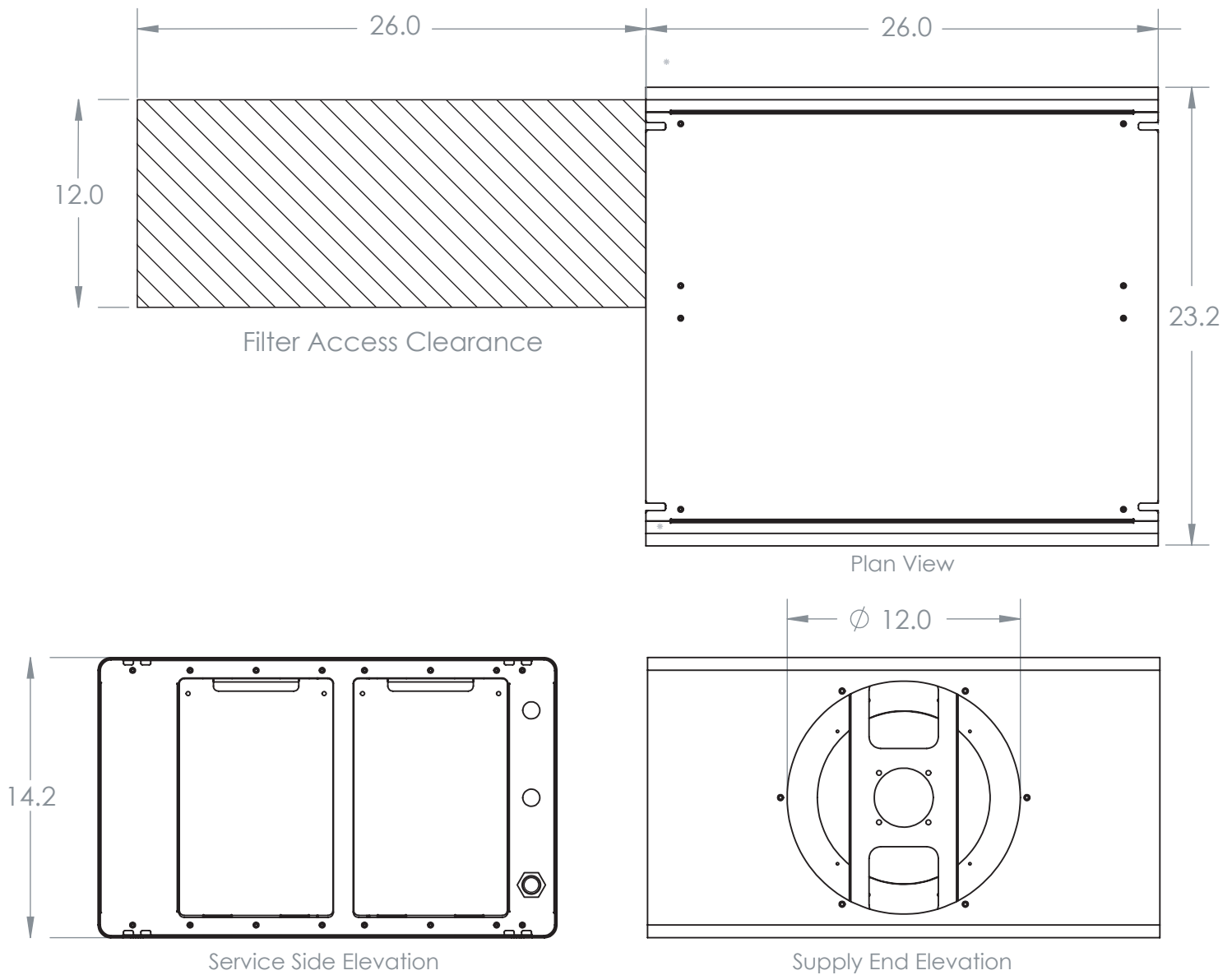
The Base Level Kit (SIAQ-P14MK-12242) is included, which consists of:

Qty 1 (one) 2" MERV 14 Particulate

Qty 1 (one) 2" Molecular Filter



## Distributed Intelligent Clean Air System



## SIAQ1-DIST : SPECIFICATIONS

<b>Standard Input Voltage/Frequency</b>	120 VAC, 50 / 60 Hz	<b>Weight (Standard Unit)</b>	70bs
<b>Optional Input Voltage/Frequency</b>	208/230/277/347 VAC, 50 / 60 Hz	<b>Weight (with optional transformer)</b>	78lbs
<b>Airflow Capacity</b>	Up to 500 CFM	<b>Power Consumption</b>	200 W (Max)
<b>Sound Level** (Sensing Mode)</b>	NC-25	<b>Temperature Range</b>	0 - 140 F
<b>Sound Level** (Nominal Cleaning)</b>	NC-27	<b>Humidity Range</b>	5 - 85% RH (non-condensing)
<b>Filter Life</b>	Over 1 year*	<b>Compliance and Certifications</b>	UL 867, UL 2998, CARB
<b>Unit Dimensions (L x W x H)</b>	23" x 26" x 14"		

\*\* 1m from unit